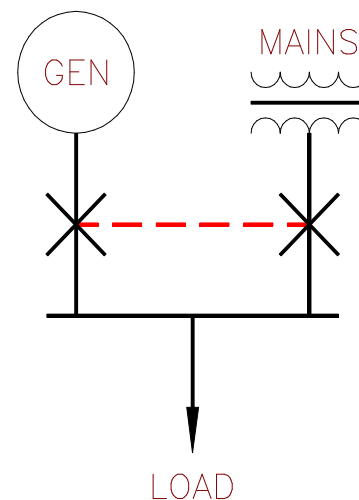


AUTOMATIC MAINS FAILURE PANELS

Free Standing

630 to 6300 A

RATING EACH SET	3 POLE REFERENCE	4 POLE REFERENCE
630 A	MSAMF 630 3	MSAMF 630 4
800 A	MSAMF 800 3	MSAMF 800 4
1000 A	MSAMF 1000 3	MSAMF 1000 4
1250 A	MSAMF 1250 3	MSAMF 1250 4
1600 A	MSAMF 1600 3	MSAMF 1600 4
2000 A	MSAMF 2000 3	MSAMF 2000 4
2500 A	MSAMF 2500 3	MSAMF 2500 4
3200 A	MSAMF 3200 3	MSAMF 3200 4
4000 A	MSAMF 4000 3	MSAMF 4000 4
5000 A	MSAMF 5000 3	MSAMF 5000 4
6300 A	MSAMF 6300 3	MSAMF 6300 4



DIMENSIONS

RATING	HEIGHT	DEPTH	WIDTH
630 A	2000mm	400mm	800mm
800 A	2000mm	500mm	1200mm
1000 A	2000mm	500mm	1200mm
1250 A	2000mm	500mm	1200mm
1600 A	2000mm	700mm	1600mm
2000 A	2000mm	700mm	1600mm
2500 A	2000mm	700mm	1600mm
3200 A	2000mm	700mm	1600mm
4000 A	2000mm	700mm	2000mm
5000 A	2000mm	700mm	2000mm

TYPICAL AUTOMATIC MAINS FAILURE PANEL.

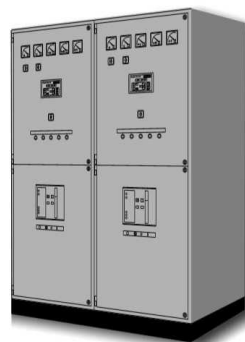


ILLUSTRATION SHOWS A DOUBLE SECTION AUTOMATIC MAINS FAILURE PANEL RATED AT 2000 AMPS. THE BUSBARS ARE RATED TO SUIT THE OUTGOING LOAD CONNECTIONS SITED BETWEEN THE INCOMING GENERATOR AND MAINS CIRCUIT BREAKERS.

EQUIPMENT INCLUDED AS STANDARD.

- 1 VOLTMETER WITH SELECTOR SWITCH
- 1 AMMETER WITH SELECTOR SWITCH
- 1 FREQUENCY METER
- 1 AUTOMATIC MAINS FAILURE MODULE REF MS509
- 2 INTERLOCKED ACB's (MCCBS) UP TO 1250A

RATINGS

CURRENT	250A	400A	630A	800A	1000A	1250A	1600A	2000A	2500A	3200A	4000A	5000A
GEN KVA 415V	180	287	452	575	718	897	1150	1437	1796	2300	2875	3593
GEN KW 415V @ 0.8PF	144	230	362	460	575	718	920	1150	1437	1840	2300	2875
GEN KVA 380V	163	262	413	526	657	822	1052	1316	1645	2105	2632	3290
GEN KW 380V @ 0.8PF	131	210	331	421	526	658	842	1053	1316	1684	2106	2632

