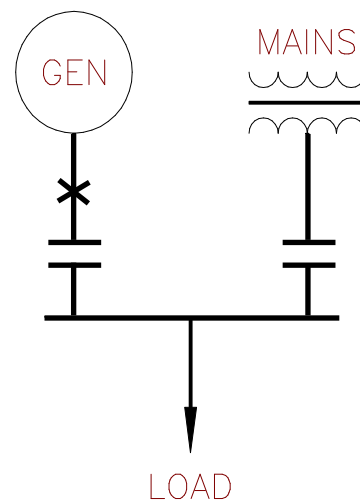


AUTOMATIC MAINS FAILURE PANELS

Wall Mounting

40 to 630 A

RATING EACH SET	3 POLE REFERENCE	4 POLE REFERENCE
40 A	MSWAMF 40 3	MSWAMF 40 4
60 A	MSWAMF 60 3	MSWAMF 60 4
100 A	MSWAMF 100 3	MSWAMF 100 4
125 A	MSWAMF 125 3	MSWAMF 125 4
160 A	MSWAMF 160 3	MSWAMF 160 4
200 A	MSWAMF 200 3	MSWAMF 200 4
250 A	MSWAMF 250 3	MSWAMF 250 4
400 A	MSWAMF 400 3	MSWAMF 400 4
630 A	MSWAMF 630 3	MSWAMF 630 4



DIMENSIONS

RATING	HEIGHT	DEPTH	WIDTH
40 A	600mm	200mm	600mm
60 A	600mm	200mm	600mm
100 A	600mm	200mm	600mm
125 A	800mm	200mm	600mm
160 A	800mm	200mm	600mm
200 A	800mm	200mm	800mm
250 A	800mm	200mm	800mm
400 A	1000mm	300mm	800mm
630 A	1200mm	400mm	1000mm

TYPICAL AUTOMATIC MAINS FAILURE PANEL.

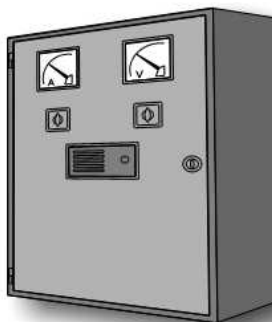


ILLUSTRATION SHOWS A WALL MOUNTED AUTOMATIC MAINS FAILURE PANEL RATED AT 200 AMPS.

EQUIPMENT INCLUDED AS STANDARD.

- 1 VOLTMETER WITH SELECTOR SWITCH
- 1 AMMETER WITH SELECTOR SWITCH
- 1 FREQUENCY METER
- 1 AUTOMATIC MAINS FAILURE MODULE
- 2 INTERLOCKED CONTACTORS
- 1 GENERATOR MCCB

RATINGS

CURRENT	40A	60A	100A	125A	160A	200A	250A	400A	630A
GEN KVA 415V	28	43	71	89	115	143	180	287	452
GEN KW 415V @ 0.8PF	23	34	57	71	92	115	144	230	362
GEN KVA 380V	26	39	65	82	105	131	163	262	413
GEN KW 380V @ 0.8PF	21	31	52	65	84	105	131	210	331

